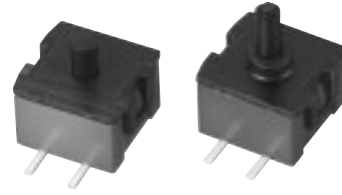


### 2NV Detector Switches

Type: **ESE21**



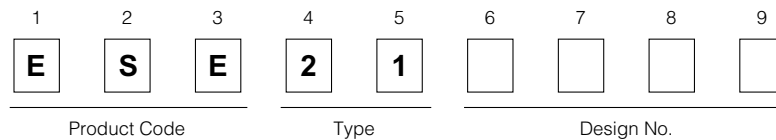
#### ■ Features

- External dimensions : 3.4 mm×3.8 mm, Height 2.3 mm
- Light operating force
- Reflow soldering

#### ■ Recommended Applications

- Detection of media in portable electronic equipment
- Detection of flaps (of folded body) for cellular phones

#### ■ Explanation of Part Numbers

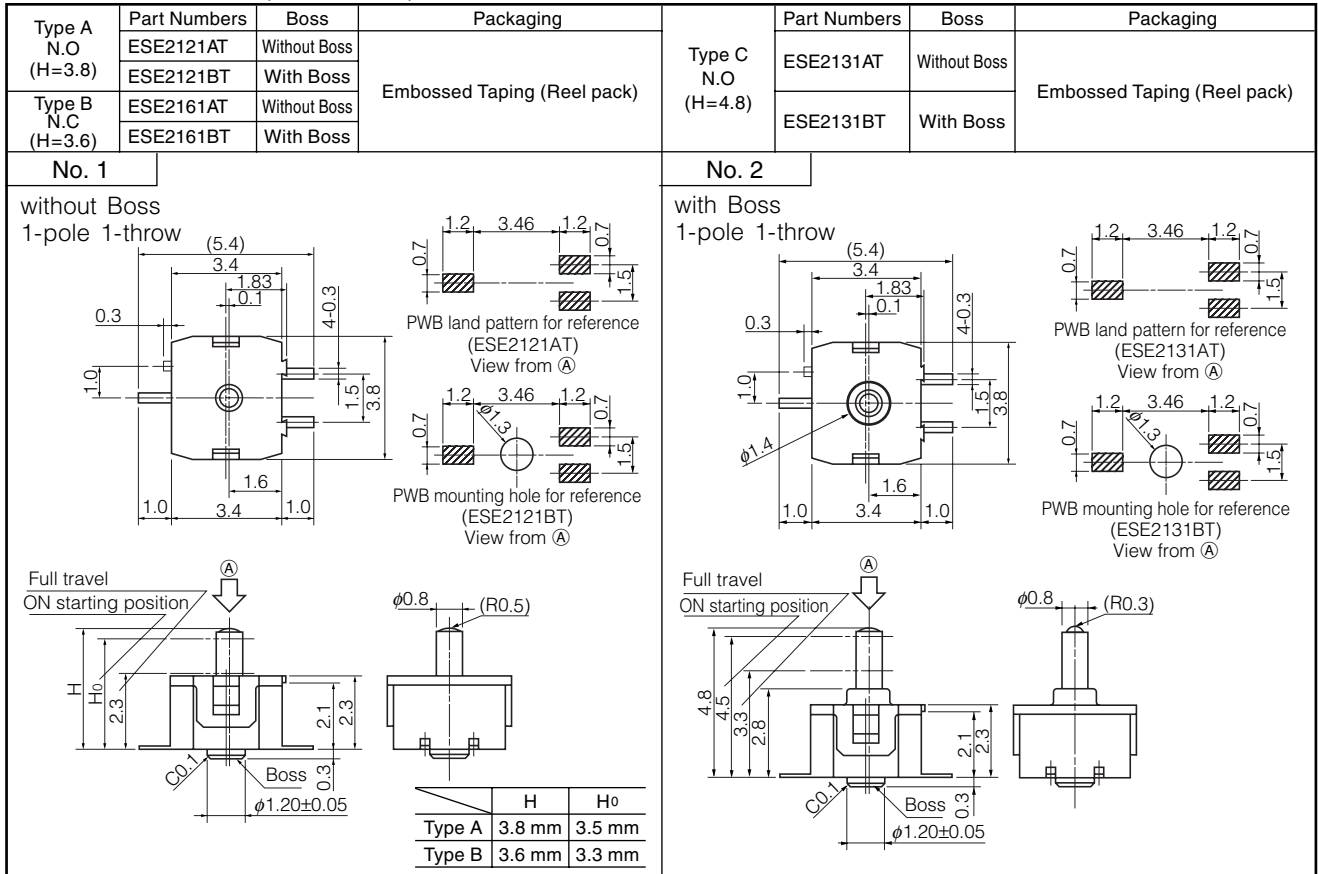


#### ■ Specifications

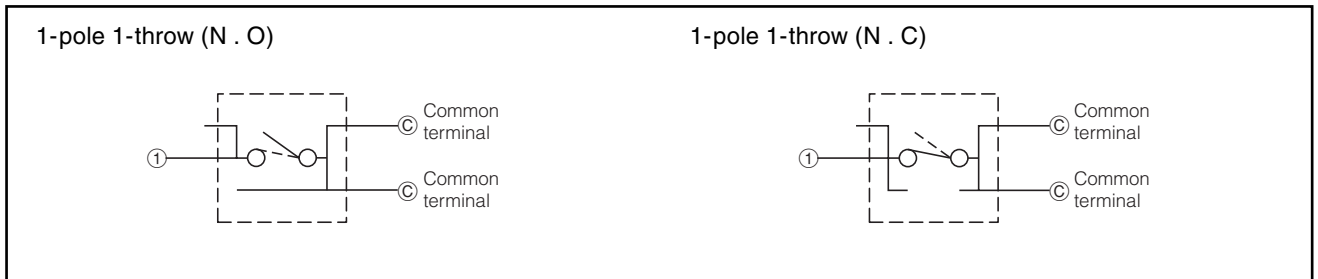
Rating	50 $\mu$ A 3 Vdc to 10 mA 5 Vdc (Resistive load)
Contact Resistance	500 m $\Omega$ max.
Insulation Resistance	100 M $\Omega$ min. (100 Vdc)
Dielectric Withstanding Voltage	100 Vac for 1 minute
Operating Force	300 mN max.
Mounting Height	2.3 mm
Poles and Throws	1-pole 1-throw
Full Travel (Pushing distance)	<ul style="list-style-type: none"> <li>· N.O : Height=3.8 mm    2.3 mm (1.5 mm)</li> <li>· N.C : Height=3.6 mm    2.3 mm (1.3 mm)</li> <li>· N.O : Height=4.8 mm    3.3 mm (1.5 mm)</li> </ul>
Operating Life	50000 cycles min.
Temperature Range	-10 °C to +60 °C
Heat Resistance	+80 °C for 96 hours
Low Temperature Resistance	-25 °C for 96 hours
Humidity Resistance	+40 °C 90 % to 95 % RH for 96 hours
Minimum Quantity/Packing Unit	2000 pcs. Embossed Taping (Reel Pack)
Quantity/Carton	12000 pcs.

Design and specifications are each subject to change without notice. Ask factory for the current technical specifications before purchase and/or use. Should a safety concern arise regarding this product, please be sure to contact us immediately.

### ■ Dimensions in mm (not to scale)



### ■ Circuit Diagram



### ■ Packaging Specifications

Standard Reel Dimensions in mm (not to scale)

